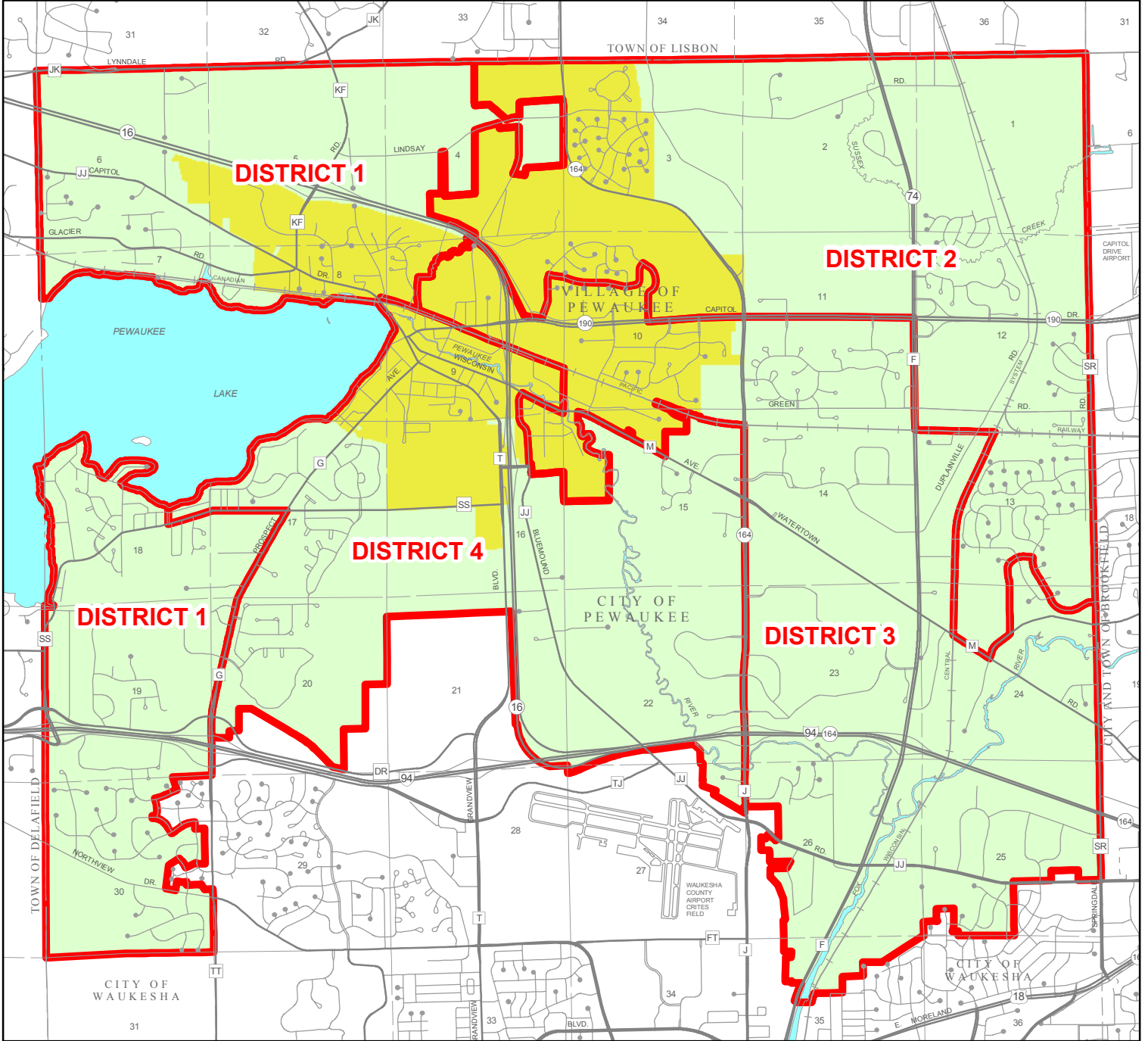


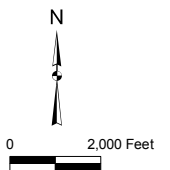
Exhibit C

Proposed Aldermanic Districts for the Consolidated Pewaukee Municipality



Proposed Aldermanic District Boundary

Ward Composition of Aldermanic Districts			
District 1	District 2	District 3	District 4
C3	C2	C1	C4
C5	C10	C9	C6
C7	V4	V6	C8
V1	V5	V7	V3
V2		V8	V9



Source: U.S. Census Bureau, City of Pewaukee, Village of Pewaukee, and SEWRPC.

Pewaukee Districting Plan

Total Population of Proposed Aldermanic Districts

Exhibit C Map

	Population Characteristics: 2000						
	Existing City Population		Existing Village Population				
Aldermanic District	Number	Percent of District Population	Number	Percent of District Population	Total District Population	Deviation from Target Population (4,987)	Percent Deviation
Green	3,696	67%	1,809	33%	5,505	518	10.4
Red	2,588	48	2,806	52	5,394	407	8.1
Yellow	2,629	59	1,832	41	4,461	-526	-10.5
Blue	2,864	62	1,723	38	4,587	-400	-8.0
Total population	11,777	---	8,170	---	19,947	---	---

Note: Population characteristics are based on the year 2000 Census. The combined population of the City and Village of Pewaukee is 19,947. The population of the City is approximately 59 percent of the combined population; the population of the Village is approximately 41 percent of the combined population.