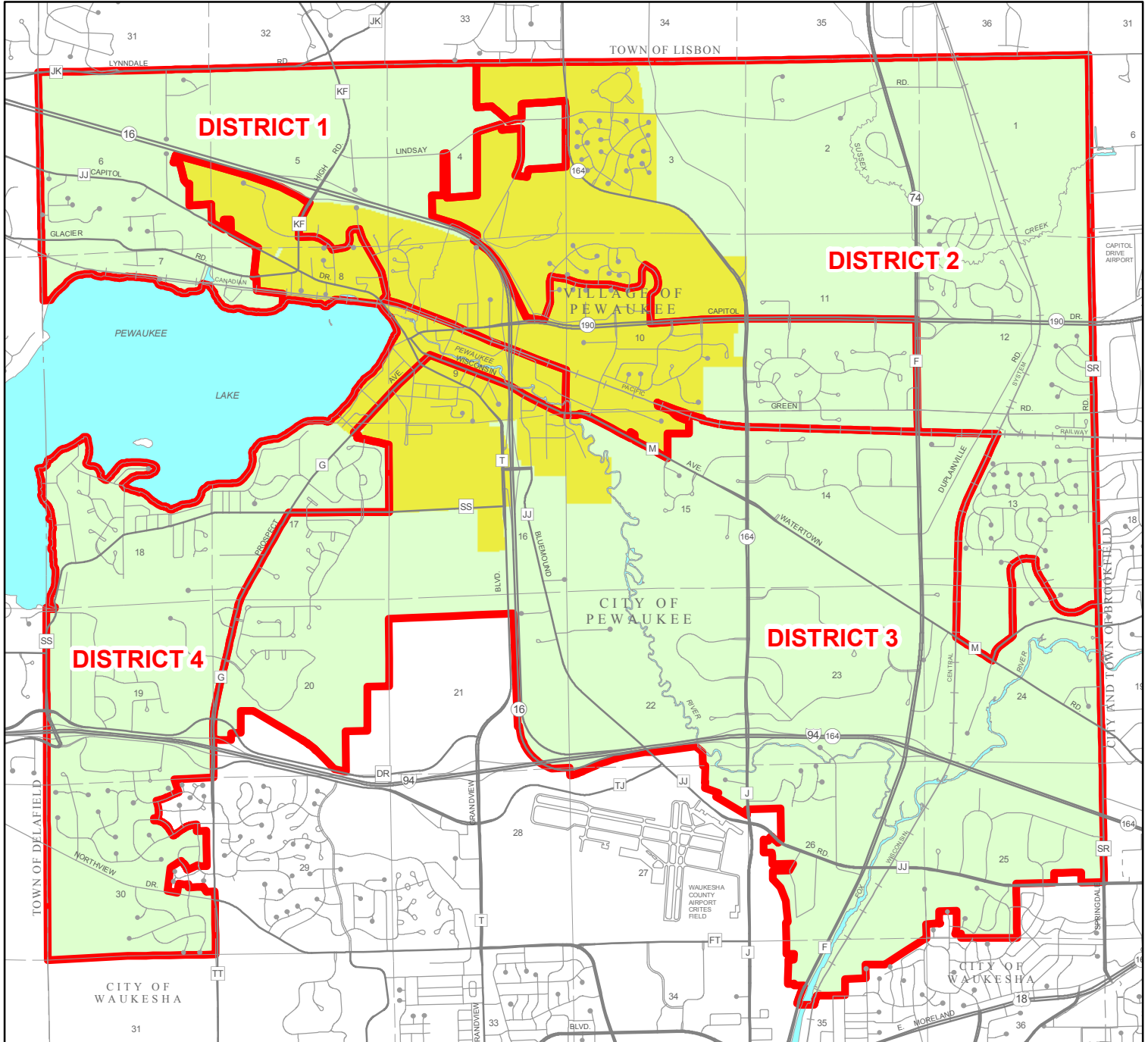


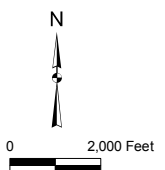
## Exhibit B

# Proposed Aldermanic Districts for the Consolidated Pewaukee Municipality



**Proposed Aldermanic District Boundary**

Ward Composition of Aldermanic Districts			
District 1	District 2	District 3	District 4
C1	C2	C6	C4
C3	C10	C8	C5
V2	V4	C9	C7
V7	V5	V6	V1
V8		V9	V3



Source: U.S. Census Bureau, City of Pewaukee, Village of Pewaukee, and SEWRPC.

# Pewaukee Districting Plan

## Total Population of Proposed Aldermanic Districts

### Exhibit B Map

	Population Characteristics: 2000						
	Existing City Population		Existing Village Population				
Aldermanic District	Number	Percent of District Population	Number	Percent of District Population	Total District Population	Deviation from Target Population (4,987)	Percent Deviation
District 1	2,498	48%	2,734	52%	5,232	245	4.9%
District 2	2,864	62	1,723	38	4,587	-400	-8.0
District 3	2,860	60	1,919	40	4,779	-208	-4.2
District 4	3,555	66	1,794	34	5,349	362	7.3
Total population	11,777	---	8,170	---	19,947	---	---

**Note:** Population characteristics are based on the year 2000 Census. The combined population of the City and Village of Pewaukee is 19,947. The population of the City is approximately 59 percent of the combined population; the population of the Village is approximately 41 percent of the combined population.