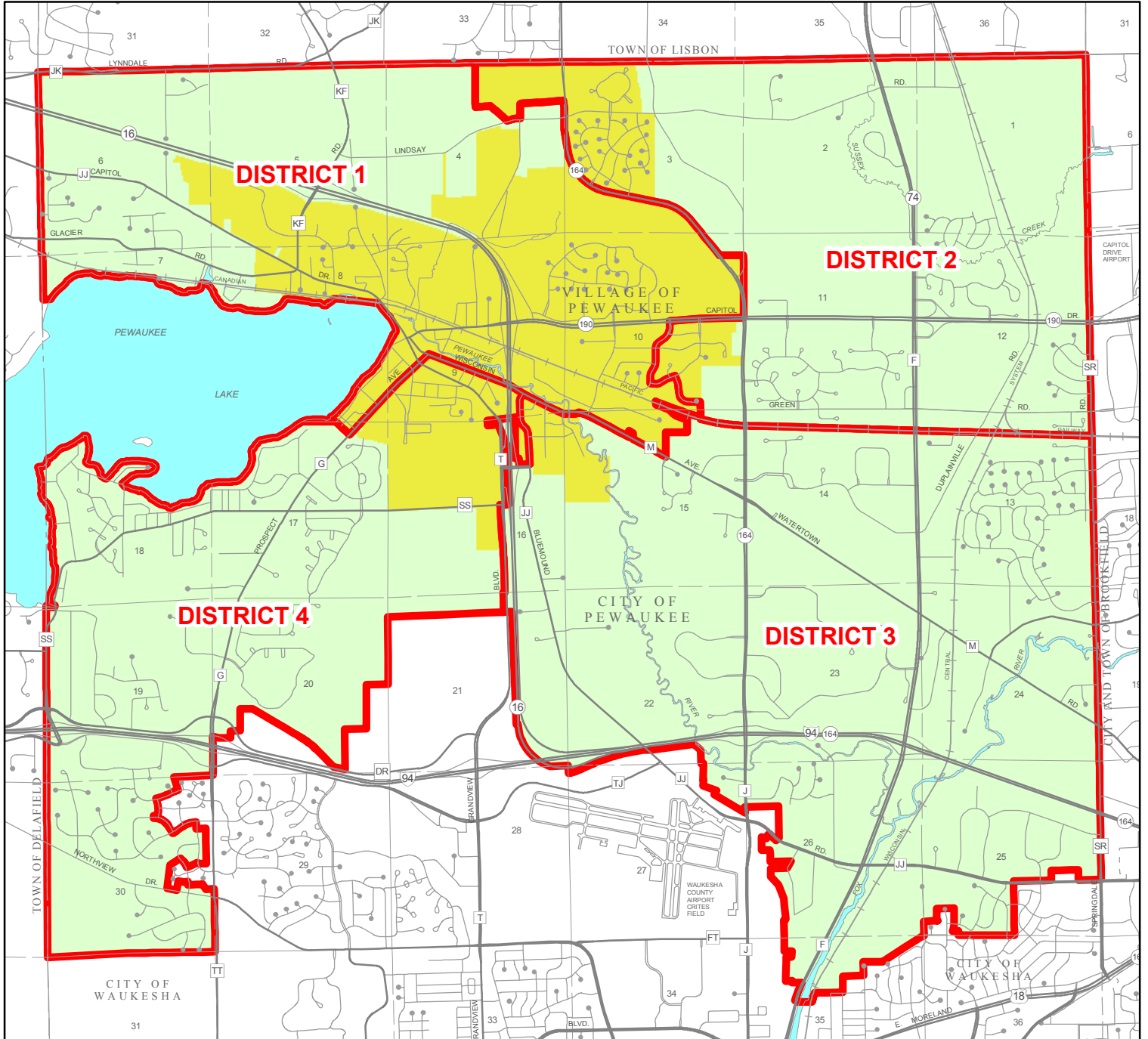


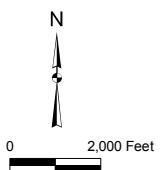
Exhibit A

Proposed Aldermanic Districts for the Consolidated Pewaukee Municipality



Proposed Aldermanic District Boundary

Ward Composition of Aldermanic Districts			
District 1	District 2	District 3	District 4
C3	C1	C8	C4
V1	C2	C9	C5
V2	V5	C10	C6
V3	V7	V6	C7
V4			V9
V8			



Source: U.S. Census Bureau, City of Pewaukee, Village of Pewaukee, and SEWRPC.

Pewaukee Districting Plan

Total Population of Proposed Aldermanic Districts

Exhibit A Map

	Population Characteristics: 2000						
	Existing City Population		Existing Village Population				
Aldermanic District	Number	Percent of District Population	Number	Percent of District Population	Total District Population	Deviation from Target Population (4,987)	Percent Deviation
District 1	781	15%	4,452	85%	5,233	246	4.9%
District 2	2,570	59	1,799	41	4,369	-618	-12.4
District 3	3,870	80	956	20	4,826	-161	-3.2
District 4	4,556	83	963	17	5,519	532	10.7
Total population	11,777	---	8,170	---	19,947	---	---

Note: Population characteristics are based on the year 2000 Census. The combined population of the City and Village of Pewaukee is 19,947. The population of the City is approximately 59 percent of the combined population; the population of the Village is approximately 41 percent of the combined population.